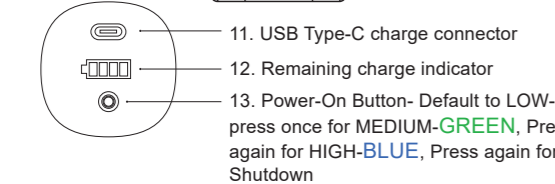
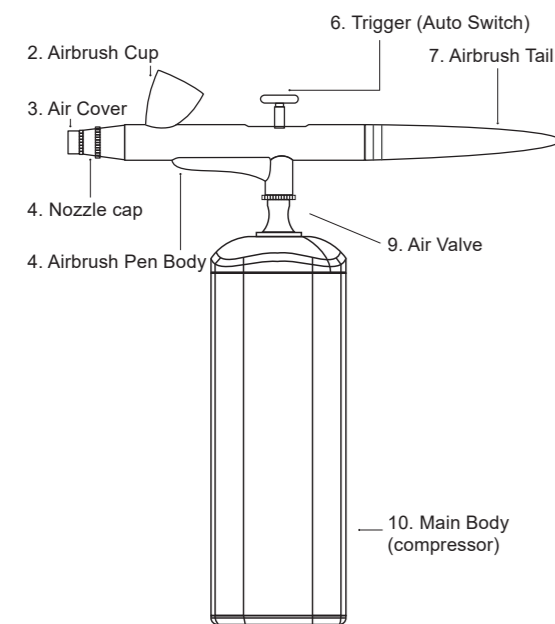




## Cordless Handheld Airbrush System Manual



Part# BEL BH-50

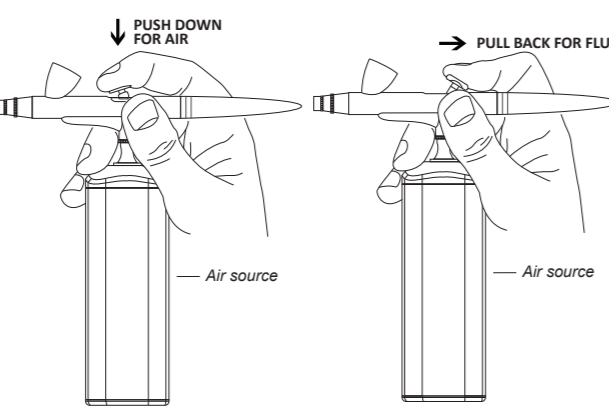
Please read this instruction manual carefully and thoroughly before operating this airbrushing system

1

### AIRBRUSH QUICK START GUIDE

The key to mastering the use of an airbrush is application practice. By following tips and techniques presented in this user's guide, you'll soon be comfortable using the airbrush.

**Holding and Triggering a Dual-Action Airbrush**  
Hold the airbrush like you would hold a pen with your index finger on the trigger for control. For a dual-action airbrush press down on the trigger for air flow and while the trigger is pushed down pull back on it to release paint flow.



**Fundamental Airbrushing Techniques for Best Results**  
When using your airbrush, spraying distance, application speed, airbrush angle, and air pressure are the fundamental principles for consistently achieving the best airbrush spraying results. To get comfortable using the airbrush, practice spraying with it at different distances and spray angles while also adjusting your application speed, air pressure, and trigger pull.

*For additional information on usage techniques, read the full fundamental airbrushing techniques section in this user's guide manual.*

2

### SYSTEM INFORMATION

**Getting Set Up is Easy**  
Simply attach the airbrush to the compressor by directly screwing it onto the airbrush air-valve stem on top of the air compressor. Remove the protection cap on the head of the airbrush, then you are all set up and ready to spray.

**Airbrush Tip Set Up**  
The airbrush has a 0.4mm fluid tip nozzle installed for spraying light viscosity makeup, water-based paint, or other liquid media. When using thicker viscosity paint or media, it should be diluted or thinned so the airbrush will spray it correctly.

**Powering the Air Compressor On**  
Push the button on the bottom of the compressor to turn it on. When the airbrush is attached to the compressor and the compressor is on, the compressor will **Auto Start**, and airflow will begin once the airbrush trigger is pulled. Releasing the airbrush trigger will **Auto Stop** the compressor and turn off the airflow. Always make sure to turn off the compressor when it is not in use.

**Operating the Air Compressor**  
Our specially designed air compressor includes 3 different airflow pressure setting modes. This allows you to adjust and control the airflow depending on your spraying needs. The airflow pressure setting modes are **LOW**, **MEDIUM**, and **HIGH**. The compressor is built with an **Auto Start** and **Auto Stop** function that allows instant airflow control of the airbrush.

**Low airflow setting mode: RED** - the power on default setting  
**Medium airflow setting mode: GREEN**  
**High airflow setting mode: BLUE**

• When first pressing the **Power-On Button** on the bottom of the compressor, it turns on and automatically sets itself to the default setting, which is the low airflow pressure setting mode and will **Auto Start** when the trigger is pressed. No air will be flowing through the airbrush until its trigger is pushed down to activate the airflow. Releasing the trigger will **Auto Stop** the airflow.

3

• If you toggle the **Power-On Button** again, the compressor will switch to the medium airflow pressure setting mode.  
• A third toggle of the **Power-On Button** switches the compressor to the high airflow pressure setting mode.  
**Charging the Battery**  
Please fully charge the battery before use. Connect and charge the battery with USB Type-C Charging Cable. It takes about 30 minutes to fully charge the battery. After the battery is fully charged the air compressor can be used continuously for about 40 minutes or intermittently for over 1 hour. Do not operate the airbrush while the battery is charging.

**Battery Level Indicator Light**  
The LED indicator light will fully light up on the indicator panel when the battery is fully charged, and the indicator light will lower as the battery charge level drops.

### AIRBRUSH MAINTENANCE

**Cleaning the Airbrush**  
• Before cleaning the airbrush always empty the excess paint first, and always clean the airbrush between color changes and at the end of each painting session. Adding a new color to the airbrush without cleaning it will lead to color contamination from the previous color.  
• To prevent the airbrush from getting clogged, never allow paint to dry inside of the airbrush.  
• Refill the airbrush cup or bottle using the appropriate cleaning solution for the type of paint medium that was used in the airbrush. Warm water works for most water-based mediums.  
• Flush out the airbrush by back bubble flushing. Do this by plugging the tip of the brush you're your finger while pulling the trigger back so the liquid bubbles inside the cup for a while, and then spray out the liquid until the airbrush sprays clear. Repeat process if necessary. Back bubble flushing aerates, cleans, and clears the cup and passages within the airbrush.

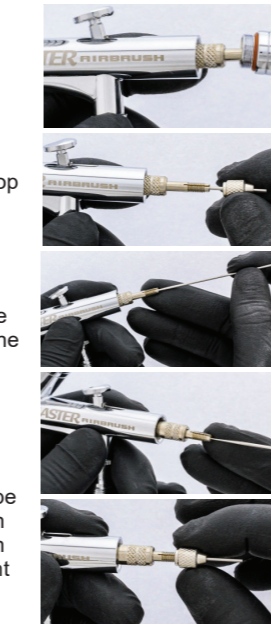
#### BACK BUBBLE FLUSHING



4

**Cleaning Your Needle**  
Full needle cleaning is recommended after several spraying sessions or if there is a possible paint clog in the airbrush.

- Unscrew and remove the airbrush handle.
- Loosen the needle chucking retaining nut by hand.
- Pull the needle out. Needles are extremely sharp and delicate. Be careful not to drop or damage needle while cleaning it.
- Clean buildup off the needle with a cleaning solution or wipes by wiping only from the back of the needle towards the sharp needle point front to prevent puncturing yourself.
- We recommend cleaning the airbrush's nozzle while the needle is out of the airbrush. Remove the air cap, then wipe the nozzle with a fresh cotton swab with a cleaning solution to remove all makeup or paint buildup around the nozzle.
- Gently push the needle back into place. Tighten the needle chucking retaining nut and then reassemble the airbrush handle.



**Deep Cleaning a Clogged Airbrush**  
If your airbrush is clogged, sprays unevenly, or to prevent paint buildup, give it a deep clean. To do a deep clean of the airbrush, disassemble the entire airbrush. Soak the needle cap, nozzle, and nozzle cap in a cleaning solution. Wipe the needle clean with the same solution. Once every part is clean, reassemble the airbrush.

5

### FUNDAMENTAL AIRBRUSHING TECHNIQUES, TIPS, and TRICKS

Experiment by practicing with your airbrush using the following fundamental airbrushing techniques until you're comfortable using your airbrush.

**Beginners Tips:**  
• If you're new to airbrushing, we recommend that you practice using the airbrush with water first to get an idea of how the water sprays and mists out of the airbrush.  
• You may want to keep your projects simple at first, while you're learning the basic airbrush techniques, then tackle larger projects after you're comfortable with your techniques.

**Triggering Airbrush:**  
• For the best even results when triggering the airbrush gently pull the airbrush trigger about a 1/4 to 1/2 way back for a light feathered and soft spray.  
• The further you pull the trigger back, the larger the airbrush spray pattern will be, and it will also increase the flow of color.  
• It's best to spray multiple light layers to achieve even full coverage and to darken colors.  
• Remember that less is best, as you can always add more color, but you can rarely take the color away.

**Spraying Distance:**  
• For best coverage hold the airbrush approximately 6 to 8 inches away from the surface as this will allow you to spray light soft layers.  
• The airbrush spray pattern size depends on the distance the airbrush is away from the surface.  
• The spray pattern will be smaller when the airbrush is closer to the surface, which is good for finer details.  
• The spray pattern will get wider the further away the airbrush is from the surface, which good for broader and lighter coverage.

**Keep Airbrush in Motion:**  
• To keep the coloring consistent, always keep your hand in motion while spraying until you release the trigger.  
• It is best to move your hand in a circular motion while spraying to achieve smooth even coverage.  
• Avoid abruptly starting or stopping the spray to prevent blotchiness and uneven coverage.  
• Always trigger the airbrush before starting a stroke and only release the trigger after you finish the stroke, as this will prevent puddles or balls at the beginning or the end of each stroke.  
**Application Speed:**  
• Your pace of spray across the surface will dictate how much color coverage is achieved.  
• The faster you spray a stroke across the surface the lighter the coverage will be, and a slower stroke will provide heavier coverage.

6

• Practice with a slow pace and then gradually increase your pace to see how speed affects the coverage. Repeat this process using each of the three airflow setting modes to see how air pressure dictates the speed of your spray strokes for coverage.

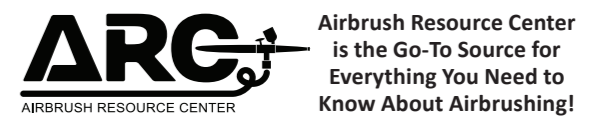
**Airbrush Angles for Spraying:**  
• Hold the airbrush nozzle at a 45° angle for broad and soft lines. The air flow setting and the distance from the surface will affect the color coverage. For fuller coverage set the compressor at the medium or high air flow setting mode. You can also adjust your spray distance from the surface or do both.  
• Hold the airbrush nozzle at a 90° angle to produce sharp and defined lines. For sharper lines, keep your spraying distance close to the surface, so the pattern size is small, then just barely pull back on the trigger, so you only release a low flow of fluid. Minimal air flow is required, so keep the compressor in the low airflow setting mode.  
• Once you get comfortable using the airbrush, you'll understand how to adjust the angles depending on your own spraying style.  
• Retrace your strokes several times to darken colors and to achieve even full coverage.

**Air Pressure:**  
• The compressors 3 airflow pressure control setting modes allow you adjust the airflow depending on your spraying needs.  
• It's best to practice spraying while adjusting through the compressors 3 airflow pressure setting modes, low, medium, and high to understand how the airbrush responds to the different air pressures.  
**Always Remember the Importance of Distance, Speed, Angle and Air Pressure:**  
• These are the key airbrushing principles to learn and follow to always achieve the best spray results. To get comfortable using the airbrush, practice spraying with it at different distances and spray angles, while also adjusting your speed of application and levels of air flow.

**Airbrush Trouble Shooting**  
• Not spraying fluid - Fluid control knob may be too tight and needs to be loosened; Needle chucking needs to be tightened.  
• An uneven or sputtering spray indicates the material being sprayed is too thick and needs to be thinned  
• Nozzle is blocked - Remove and clean nozzle. Back bubble flush with cleaning solution to remove paint inside the airbrush; Do a deep cleaning of the airbrush.

7

PRODUCT SPECIFICATIONS	
Model No.	BEL BH-50
Spray Nozzle Size	0.4 mm Tip Set installed
Air Pressure	15 to 30 PSI
Airflow	6-8 L/M
Power	5W
Motor	DC5V
Charging Time	30 Minutes
Working Time	40 Minutes Continuous, 1 Hour Intermittently
Battery	5V2A, 3.7V 2000mAh
Charging Connector	USB Type-C Cable
Certification:	CE, FCC, RoHS
Thread Size	1/8" BSP
Includes: Wrench, Eyedropper, 5 Cleaning Brushes, 2 O-Rings	



For more information about our Airbrush Brands visit:  
Master Airbrush - [www.usartsupply.com](http://www.usartsupply.com) or [www.tcpglobal.com](http://www.tcpglobal.com)  
Bellocchio - [www.bellocchio.com](http://www.bellocchio.com)  
U.S. Cake Supply - [www.uscakesupply.com](http://www.uscakesupply.com)

**WARNING:** Keep compressor and batteries away from fire, flammable, and explosive objects. Airbrushing system is not intended for use with solvent-based substances.

**Warranty Technical Support and Return Policy:**  
• The warranty period is one year from the date of purchase for damage caused by the manufacturing process or components under normal use.  
• Technical support is available at Support@TCPglobal.com or by calling 858-909-2110 from 7:00 am to 5 pm, Monday through Friday, Pacific Time. TCP Global Corporation.

**Warning:** Cancer or reproductive harm. [www.P65Warnings.ca.gov](http://www.P65Warnings.ca.gov)

8