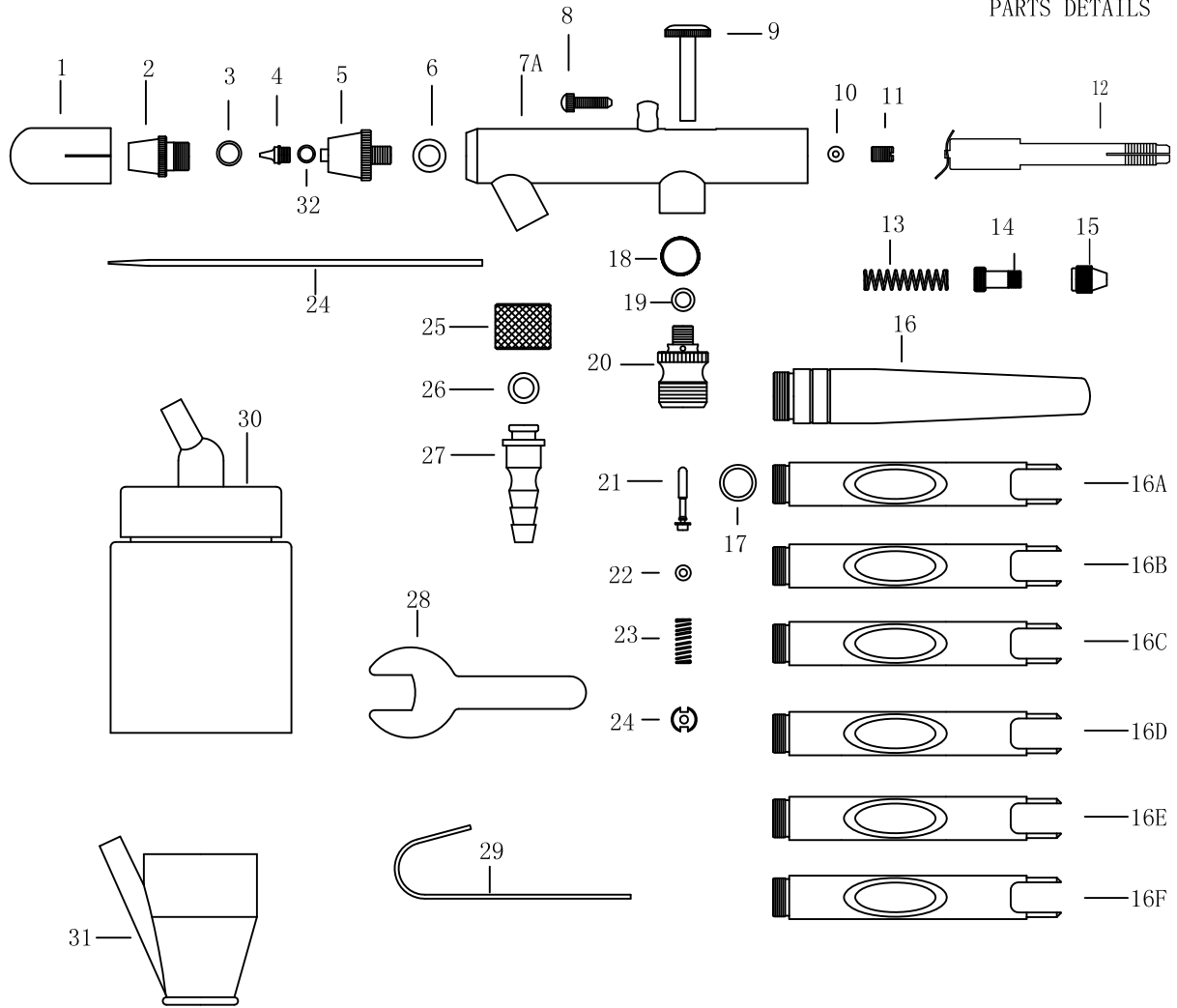


PARTS DETAILS



S66

S68

#	Part Description	Part#	S66	S68
1	Protective Cap		■	■
2	Air Cap		■	■
3	O-Ring		■	■
4	Nozzle		■	■
5	Air Cap Body		■	■
6	O-Ring		■	■
7A	Airbrush Body		■	■
8	Adjustment Screw		■	■
9	Finger lever		■	■
10	O-Ring		■	■
11	Needle Guide		■	■
12	O-Ring for Needle Guide		■	■
13	Spring		■	■
14	Spring Case		■	■
15	Needle Chucking Net		■	■
16	Standard-Handle Adjusting		×	■
16A	Standard-Handle Adjusting (Red)		■	×
16B	Standard-Handle Adjusting (Purple)		■	×
16C	Standard-Handle Adjusting (Green)		■	×
16D	Standard-Handle Adjusting (Royal Blue)		■	×
16E	Standard-Handle Adjusting (Wathet Blue)		■	×
16F	Standard-Handle Adjusting (Golden)		■	×
17	O-Ring		■	×
18	O-Ring		■	■
19	O-Ring		■	■
20	Valve Body		■	■
21	Valve Rod		■	■
22	Valve Rod O-Ring		■	■
23	Valve Spring		■	■
24	Valve Screw		■	■
25	Hose Connector Nut		■	■
26	O-Ring for Hose Connector		■	■
27	Hose Connector		■	■
28	Head Cap Spanner		■	■
29	Metal hanger		■	■
30	22 cc Glass jar assembly	SIX	■	■
31	5 cc Metal cup	×	■	■
31	O-Ring		■	■