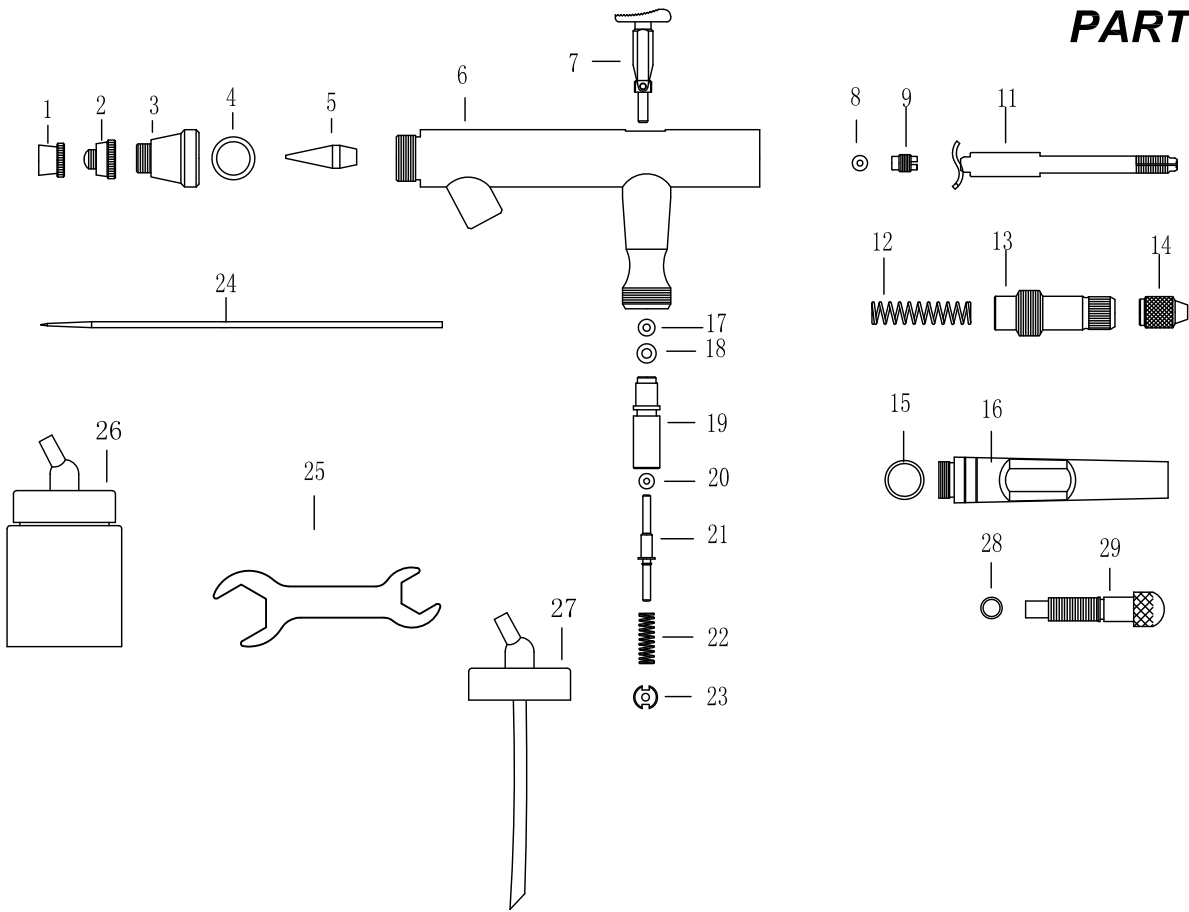


# PARTS DETAILS



S67

#	Part Description	Part#	S62	QTY
1	Needle Cap		■	8
2	Nozzle Cap		■	8
		0.5	■	8
3	Head Cap		■	8
4	O-Ring		■	8
5	Nozzle	0.3	■	2
		0.5	■	8
		0.8	■	2
6	Airbrush Body		■	8
7	Operation Lever		■	8
8	O-Ring for Needle Guide		■	8
9	Needle Guide		■	8
11	Needle Chucking Guide		■	8
12	Spring		■	8
13	Spring Case		■	8
14	Needle Chucking Net		■	8
15	O-Ring		■	8
16	Standard-Handle Adjusting		■	8
17	O-Ring		■	8
18	O-Ring		■	8
19	Air valve Guide Body		■	8
20	Valve Rod O-Ring		■	8
21	Valve Rod		■	8
22	Valve Spring		■	8
23	Valve Screw		■	8
24	Needle	0.3	■	2
		0.5	■	8
		0.8	■	2
25	Head Cap Spanner		■	3
26	22 cc Glass jar assembly		■	8
27	Plastic round bottle cap		■	8
28	O-Ring		■	8
29	Adjusting Screw		■	8