



OCTOPUS PROFESSIONAL
AUTOMATIC POOL CLEANER
Model 1808 - MANUAL



1 Components List

2

a. Install sealing disc skirt b. Install deflector wheel, make sure it is clicked into, and can rotate freely.

3 Working Sketch for a completed cleaner

4

• Turn Off the pump of your pool.

5

• Replace the eyelet of your return inlet by part "I", ensuring that the opening faces downward so as not to interfere with the operation of the cleaner. If your pool is equipped with a vacuum plug, follow the instruction #6.

6

OR

• Connect the part "H" into your Vac plug. Connect the regulator "G" into the part "H". Make sure that the arrow under the regulator is pointed towards the Vac plug.

• Assemble the two elbow connectors "F" to the regulator "G". Insert the attachment "H" facing downward and then the regulator. Take care the arrow under the regulator is pointing into the skimmer.

7

• Connect one end of hose "D" to the tube opening on the top of "B" and then connect the other end to another "D" and finish with all hoses "D" and then "E".

8

• Place the weight "K" onto the third hose section and slide it backward or forward to adjust the buoyancy of the hoses and angle of cleaner in use.

9

• Fill the hoses with water to eliminate the air pockets.

10

• Use enough hose sections to reach the farthest point in the pool plus two sections

11

• If your regulator is connected to a vacuum plug, then connect the hose "E" directly to the regulator "G". If your regulator is connected to a wall skimmer, then pass the hose through the skimmer mouth and connect it to the regulator via the elbow "F".

12

• Adjust your filtration system to the vacuum setting. A pump of at least 1/2 horsepower (1000ga/h) is required.

13

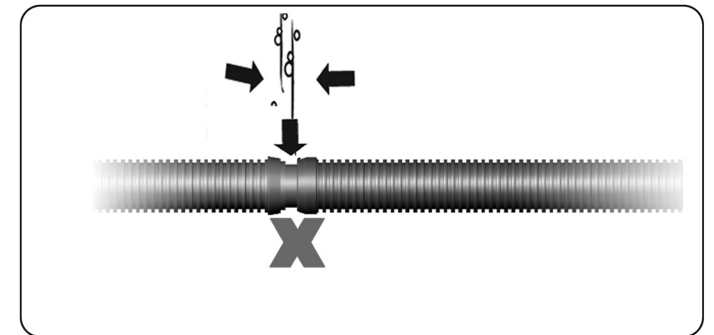
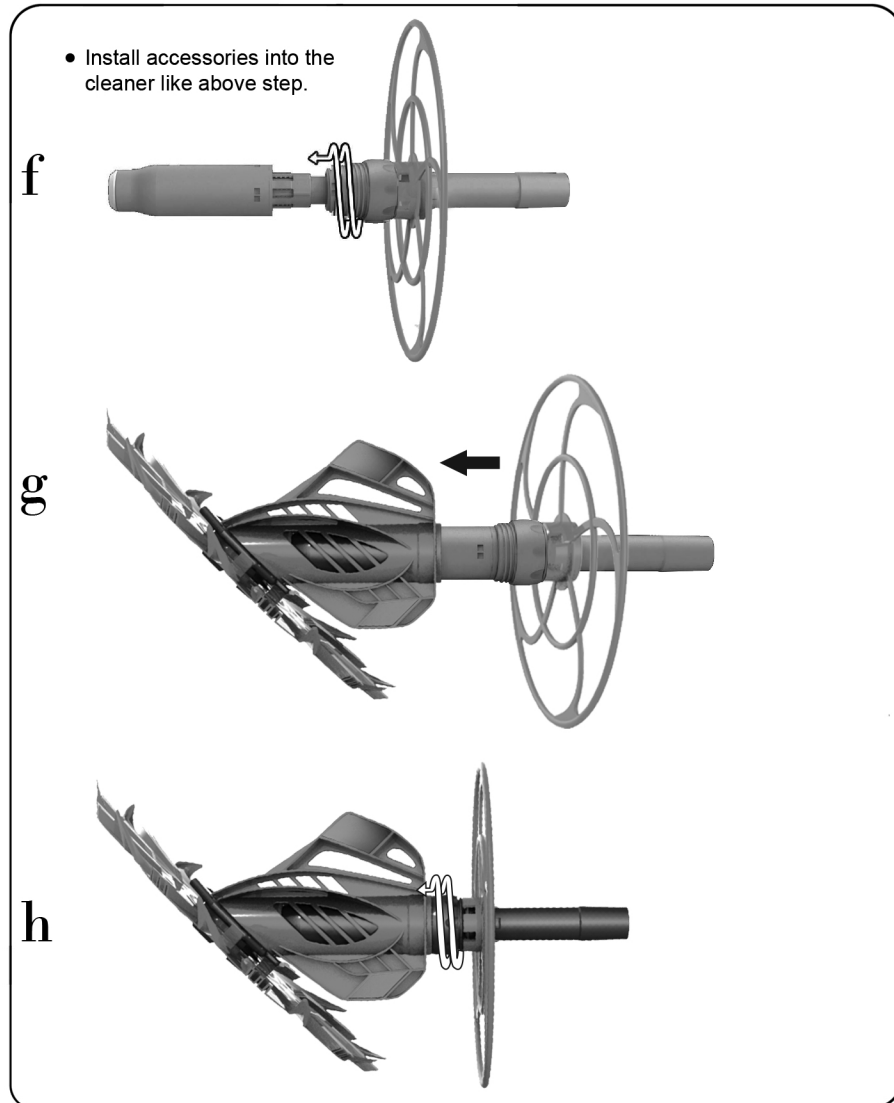
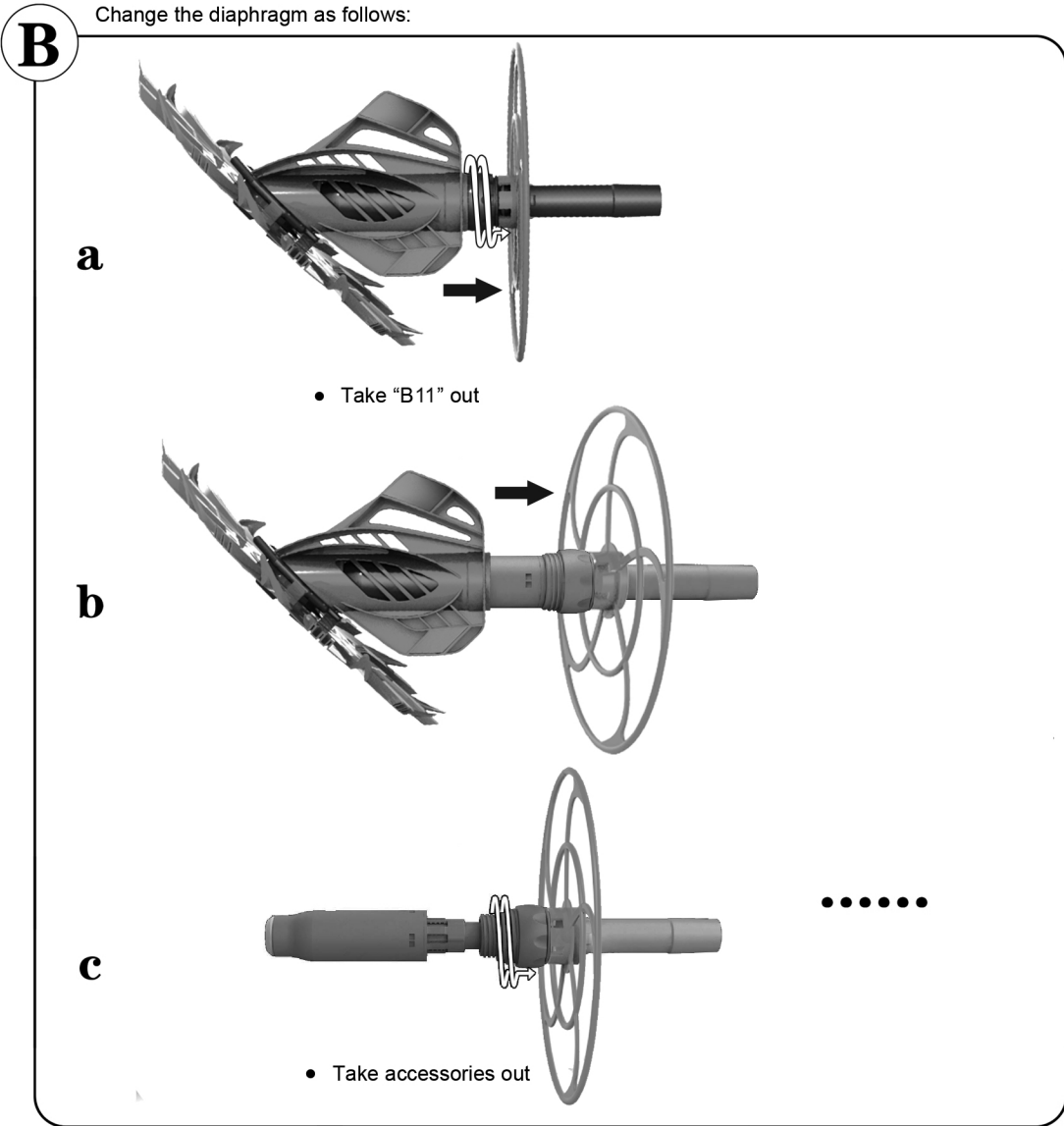
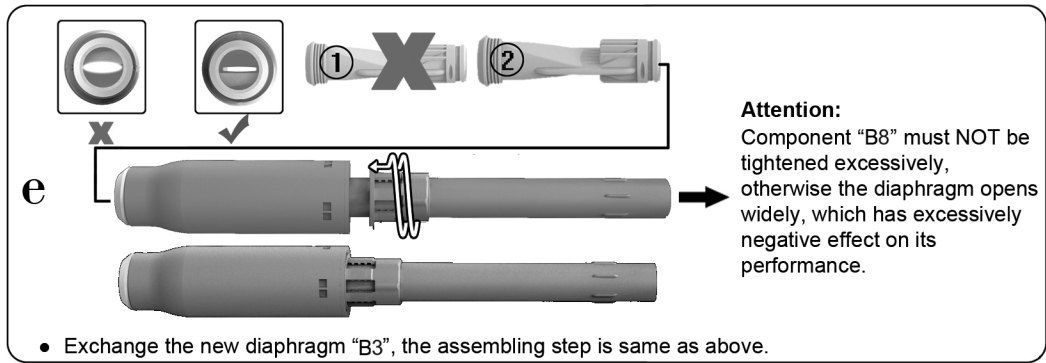
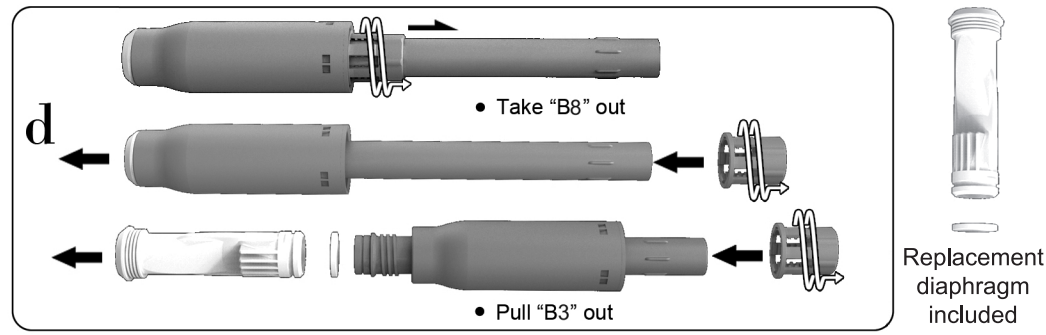
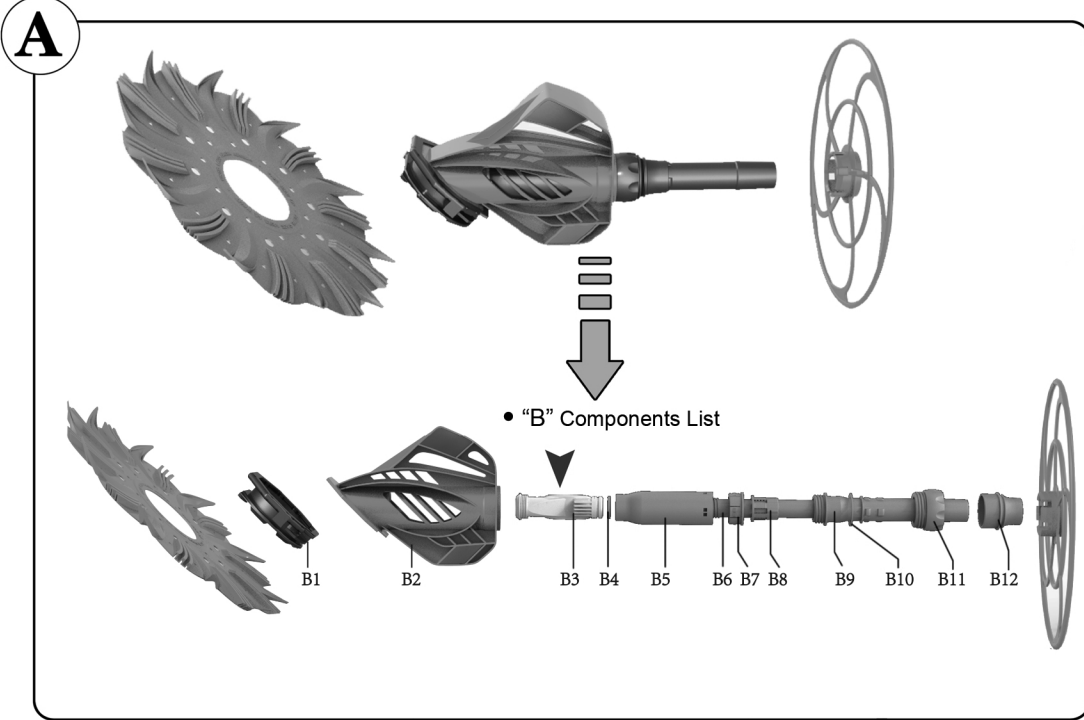
• Turn on the pump and relax as your cleaner cleans your pool.

14

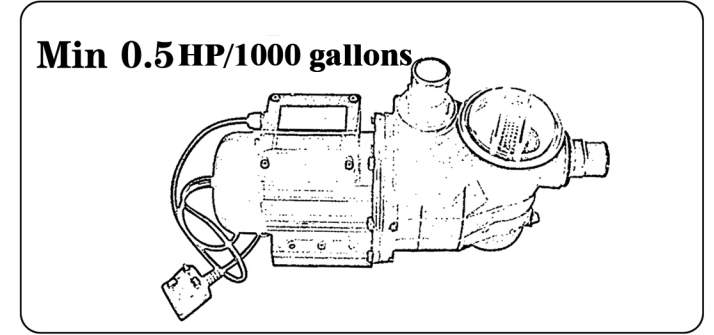
• You can adjust the power of your cleaner by turning the knob of the regulator "G" as shown

15

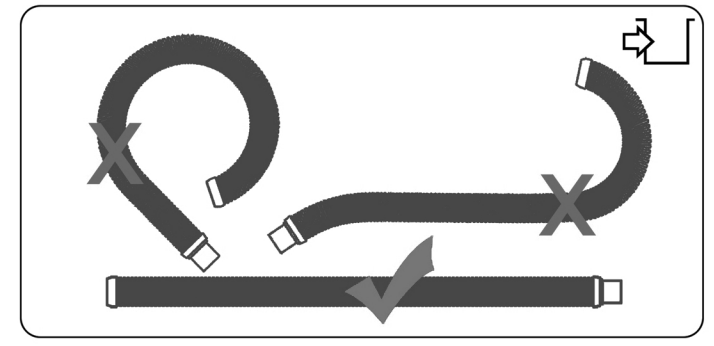
• If the cleaner leans too far forward or backwards during operations, this can be corrected by moving the weight "K" along the tube section as shown in the drawing.



- No leak is allowed at the joint of the pipes



- Pump for the cleaner should have a minimum power of 0.5HP/1000gallons



- Always store the hose straight

Trouble Shooting Guide	
PROBLEM	POSSIBLE SOLUTIONS
Cleaner stops and starts or won't move at all	<ul style="list-style-type: none"> • Ensure that the pool filter and filtering tank system are clean. • The pool suction power decreases dramatically if the diatomaceous earth pool filtering system is dirty and full of debris. Spray the filtration panels clean, then add new clean diatomaceous earth. • Check that the vacuum seal disc skirt is properly installed. • Ensure that the cleaner and hose are free of trapped air and debris. • Check the vacuums diaphragm for any blockages or damage.
Cleaner is missing spots in the pool	<ul style="list-style-type: none"> • Ensure that the correct amount of hose sections are installed for complete pool coverage. • Ensure that all the returns are directing water flow toward the pool floor. Adjust eyeballs or use water diverters. • Ensure that the hose is straight and untangled.
Cleaner does not climb	<ul style="list-style-type: none"> • Ensure that the water is balanced correctly. For example, high PH and/or lack of chlorine make the pool walls very slippery. • Increase the suction using the speed controller. • Check that the deflection ring is in the correct position. Note: Pools with sharp 90-degree wall-to-floor angles may prevent proper climbing.
Cleaner spends too much time on the walls and/or climbs out of the water	<ul style="list-style-type: none"> • Decrease the suction using the speed controller. • Adjust the position of the hose weight towards the cleaner head.
Cleaner sticks in corners, under ladders, on lights, or under pool steps	<ul style="list-style-type: none"> • Check that the correct amount of hose sections are installed. • Ensure that all the returns are directing water flow towards the pool floor. Adjust eyeballs or use water diverters. • The wheel deflector is not large enough. Larger-size deflectors should be available at local pool shops.